

McKINNON AND HARRIS®
E S T A T E • G A R D E N • Y A C H T F U R N I T U R E

CUSHIONLESS PIECES LOOKBOOK

CHESAPEAKE

Inspired by the 1958 Ole Wanscher dining chairs found in co-founder Will Massie's dining room, our Chesapeake Dining Chair features a synthetic woven rush seat made entirely with the outdoors in mind. Named for the Chesapeake Bay, the two-hundred-mile long estuary that carves the eastern landscape of Virginia, this chair pays homage to our environmental commitments and their impact on our surrounding waterways.



CHESAPEAKE DINING ARM CHAIRS
FEOLIN ROUND CAFÉ TABLE
Parigi Pink Finish

CHESAPEAKE DINING ARM CHAIRS
Goshen Stone Finish
MUNDY ROUND DINING TABLE
WITH TECHNICAL STONE TOP
Natural Bronze Finish



CHESAPEAKE DINING ARM CHAIR
Shown in Goshen Stone Finish



CHESAPEAKE DINING ARM CHAIRS
CUSTOM LENGTH PARSONS DINING TABLE
Classic White Finish



CHESAPEAKE DINING ARM CHAIRS
Classic White Finish
MUNDY ROUND DINING TABLE
WITH MOSAIC TOP
Goshen Stone Finish



CHESAPEAKE DINING ARM CHAIRS
ALBEMARLE ROUND DINING TABLE
Shenandoah Gray Green

ABBOT

The Abbot Chairs honor Scaisbrooke Langhorne Abbot (1908-1985), a celebrated artist from our founders' hometown of Lynchburg, Virginia. The Greek key pattern's unbroken, continuous style is not only symbolic of infinity and the eternal flow of things, but also perfectly reflects the classical sensibilities and refined vision of this true Renaissance man and hard-working artist.

The chair oozes vintage style vogue without compromising comfort. Its synthetic woven rush seat creates a less formal ambiance, resulting in a chair with the casual, easy elegance of French provincial furniture.



ABBOT DINING ARM CHAIR
ABBOT DINING SIDE CHAIRS
York River Oyster Finish
STANHOPE ROUND DINING TABLE
Classic White Finish

ABBOT DINING ARM CHAIR
Stayman Red Finish



ABBOT DINING ARM & SIDE CHAIR
Shown in York River Oyster Finish

ABBOT DINING SIDE CHAIR
Lancaster Blue Finish
SPOTSWOOD PIER TABLE
SULLY MIRROR
Classic White Finish



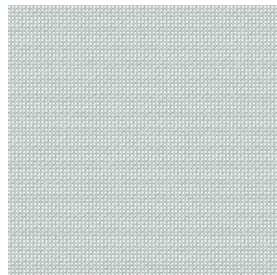
ABBOT DINING ARM CHAIR
Bermuda Hundred Blue Finish



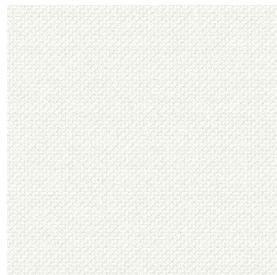
BATYLINE®

Serge Ferrari Batyline® open-weave mesh textile is an eco-friendly product comprised of 100% recycled PET yarn that combines performance with sustainability. Serge Ferrari Smart Yarn technology ensures the textile is immune to both stretching and cracking. It is resistant to UV light, mildew and micro-organisms, and requires minimal maintenance. Batyline® Textile is used on our duVal Yacht Chaise, Fayette Yacht Chairs, and Beaufort Yacht Chairs.

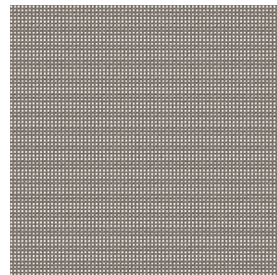
3 COLOR OPTIONS



Platinum Gray



Snow



Chestnut



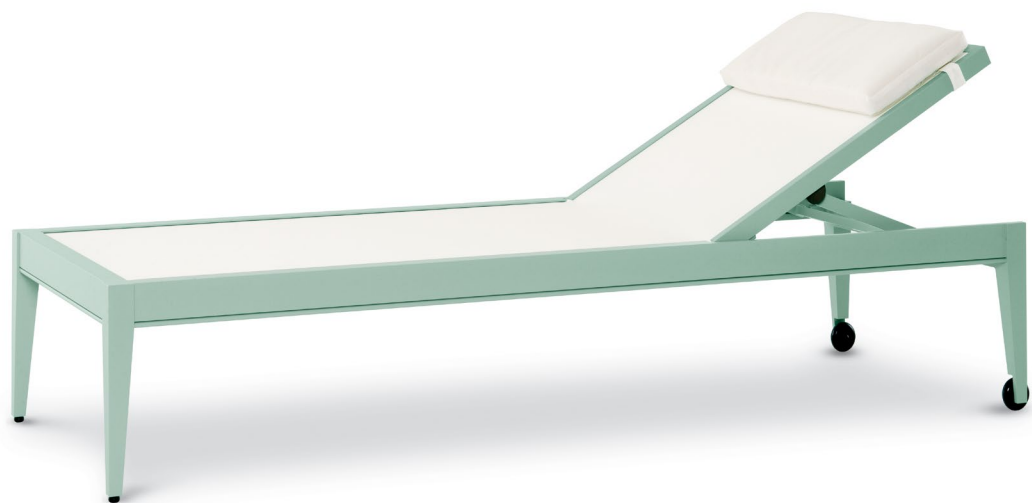
BEAUFORT YACHT DINING SIDE CHAIR
ALBEMARLE SQUARE DINING TABLE
WITH TECHNICAL STONE TOP
Classic White Finish



BEAUFORT YACHT DINING ARM CHAIR
BEAUFORT YACHT DINING SIDE CHAIRS
ALBEMARLE SQUARE DINING TABLE
WITH TECHNICAL STONE TOP
Classic White Finish



BEAUFORT YACHT DINING ARM & SIDE CHAIR
Shown in Classic White Finish



DUVAL YACHT SUN CHAISE
Shown in Lancaster Blue Finish



DUVAL YACHT SUN CHAISE
WYATT ROUND SIDE TABLE
Classic White Finish

duVAL YACHT SUN CHAISES
WYATT ROUND SIDE TABLES
Classic White Finish





FAYETTE YACHT DINING ARM CHAIRS
FAYETTE YACHT DINING SIDE CHAIRS
CARROLL SQUARE DINING TABLES
Classic White Finish
PERROW DRINKS CART
York River Oyster Finish



FAYETTE YACHT DINING ARM & SIDE CHAIR
Shown in Gwynn's Island Gray Finish

FAYETTE YACHT DINING ARM CHAIRS
FAYETTE YACHT DINING SIDE CHAIRS
SUHLING SQUARE DINING TABLES
Classic White Finish



McKINNON AND HARRIS®
E S T A T E • G A R D E N • Y A C H T F U R N I T U R E

www.mckinnonharris.com