

McKINNON AND HARRIS®
E S T A T E • G A R D E N • Y A C H T F U R N I T U R E


NEW PRODUCTS LOOKBOOK

CAMPOSTELA CONSOLE TABLE

Inspired by the form of 17th-century monastic fratino tables, our Campostela Console Table features striking, theatrical stretchers and a natural stone top that floats at ease above its lyre-shaped ornamental base.



CAMPOSTELA CONSOLE TABLE
Natural Bronze Finish
Marmi Calacatta Natural Stone Top

A long, narrow console table with a white marble top and a dark bronze metal base. The base features a large, arched, decorative scrollwork design. The table is set against a light-colored wall with greenery hanging from above and a potted plant on the right. The lighting creates soft shadows on the floor.

CAMPOSTELA CONSOLE TABLE
Natural Bronze Finish
Marmi Calacatta Natural Stone Top



STAYMAN RED

This savory shade evokes the spirit of our Grandmother, Ella Wyatt McKinnon Massie, and her Stayman apple orchard at Lone Jack Farm. Offering a grounding effect in the garden, Stayman Red is a flexible hue that pairs well with warm and cool tones alike.



WATSON BENCH
Stayman Red Finish





ABBOT DINING ARM CHAIR
Stayman Red Finish

BASTILLE COLLECTION

With its striking skeleton key-shaped arm and sculptural, French modernist-inspired frame, our Bastille Collection embodies a timeless mix of art and artifact.

It is named for the historic Bastille Key, now held in collection at Mount Vernon, which was given to President George Washington by his friend the Marquis de Lafayette following the end of the French Revolution.





BASTILLE CLUB CHAIRS
Natural Bronze Finish
La Dolce Vita Feather Fabric

BASTILLE SIDE TABLE
Natural Bronze Finish
Marmi Calacatta Natural Stone Top

BASTILLE CLUB CHAIR
York River Oyster Finish
Cielo Moon Fabric
Optional Luggage Stitching
Optional Tufted Back Cushion



BASTILLE CLUB CHAIR
Natural Bronze Finish
Cielo Moon Fabric
Optional Luggage Stitching

BASTILLE SOFA AND CLUB CHAIRS
Esmont Slate Finish
La Dolce Vita Moon Fabric
Optional Luggage Stitching



LEGGETT LANTERNS
Gwynn's Island Gray Finish

WYATT RECTANGULAR COFFEE TABLE
Esmont Slate Finish
Marmi Taj Mahal Natural Stone Top

BASTILLE SOFA
Natural Bronze Finish
Cielo Moon Fabric
Optional Luggage Stitching



BASTILLE SOFA
York River Oyster Finish
Cielo Moon Fabric
Optional Luggage Stitching





BASTILLE SIDE TABLE
Natural Bronze Finish
Marmi Calacatta Natural Stone Top



BASTILLE SIDE TABLE
Shown in York River Oyster Finish
with Marmi Calacatta Natural Stone Top

ESMONT SLATE

With subtle blue and brown undertones, McKinnon and Harris Esmont Slate echoes Virginia's rich history with the riverbed stone. It is aptly named for the historic Albemarle County quarry located between the James River's Ballenger and Totier Creeks.



VIRGINIA BENCH WITH BONNYRIGG BACK

With its diamond lattice detail, our Virginia Bench with Bonnyrigg Back embraces an East-meets-West philosophy originally espoused in Bonnyrigg, Scotland. It was here, in their family's church pew, that the "cockpen" Chinese Chippendale style originated for the Earls and Marquesses of Dalhousie.







VIRGINIA THREE-SEATER BENCH WITH BONNYRIGG BACK
Shown in Poinciana Coral Finish

NEW FROM THIRZA

Recalling travels abroad to the region, we've always wanted to create a collection inspired by contemporary Mediterranean design. Our Thirza Collection takes notes from mid-century modern and traditional American design as well, expressing its distinct personality through curved, organic shapes and whimsical hand-sculpted details. Thirza is named for primary designer Colin Knight's mother and grandmother, both artists and craftspeople themselves who inspired his passion for design and handcraft.



THIRZA TALL CHAIRS
York River Oyster Finish
Piume Oystercatcher Fabric

THIRZA TALL TABLE WITH
CALACATTA MICHELANGELO
NATURAL STONE TOP
York River Oyster Finish





THIRZA DRINKS CART
Shown in Majesty Palm Finish



THIRZA DRINKS CART
York River Oyster Finish



THIRZA SUN CHAISE
Shown in Chesapeake Taupe Finish



THIRZA SUN CHAISES
Goshen Stone Finish
Cielo Sandpiper Fabric

THIRZA SIDE TABLE WITH
CALACATTA MICHELANGELO
NATURAL STONE TOP
Goshen Stone Finish

THIRZA DAY BED
Esmont Slate Finish
La Dolce Vita Feather Fabric

OPHIDIAN SIDE TABLE WITH
GALALA LIMESTONE
NATURAL STONE TOP
Aegean Bronze Patina



THIRZA DAY BED

Shown in Esmont Slate Finish with La Dolce Vita Feather Fabric

OPHIDIAN SIDE TABLE

Deeply inspired by a bronze serpent seen at the Villa Kerylos in Beaulieu-sur-Mer, we set out to design a side table that would reflect the natural curiosity of the ancient Greeks. With Mother Nature as our muse, we developed our hand applied Aegean Bronze Patina that brings our Ophidian Side Table's sense of movement and texture to life.



OPHIDIAN SIDE TABLE
Aegean Bronze Patina
Galala Classico Limestone



Adorned with cast iron serpents, antique Val d'Osne urns line the garden of Co-founder and CEO Will Massie's Richmond, Virginia garden.



OPHIDIAN SIDE TABLE WITH
GALALA CLASSICO LIMESTONE NATURAL STONE TOP
Shown in Aegean Bronze Patina

WATSON BENCH

Named for our dear friend Elizabeth Otey Watson, the Watson Bench features a horizontal grid-style back with a pagoda-inspired yoke. Elizabeth became enamored with Cantonese antiques while living in East Asia with her husband for nearly two decades during the 1950s and '60s, and she is renowned for her collection of Ming and Qing dynasty pieces.





WATSON THREE-SEATER BENCH
Chesapeake Taupe Finish
Cielo Oystercatcher Fabric
with Piume Wigeon Welt



WATSON THREE-SEATER BENCH
Shown in Traditional Black Finish

LEGGETT LANTERNS

This versatile trio of portable hurricanes creates enduring ambiance for estate, garden, and yacht settings. Named in honor of our longtime neighbor, preservationist and gardener, Patricia Leggett, the lanterns' streamlined frames blend seamlessly with both contemporary and traditional designs.

LEGGETT LANTERN TRIO
Gwynn's Island Gray Finish





LEGGETT LANTERN TRIO
Lancaster Blue Finish

LEGGETT LANTERN TRIO
Shenandoah Gray Green Finish



BON AIR HIGH TEA TABLE

Exhibiting influence from 20th-Century French modernism, our Bon Air (“good air” in French) High Tea Table appears to float effortlessly in mid-air. Taller than our coffee tables, lower than our traditional dining table height, it pairs well with sofas or a grouping of club chairs to create a less formal arrangement for dining and cocktails. It is available with either a Marmi Natural Stone top or a technical stone top.



BON AIR HIGH TEA TABLE
Traditional Black
Taj Mahal Natural Stone Top

Available with
Natural Stone



Taj Mahal

Calacatta Michelangelo Extra

Belgian Bluestone

Galala Classico



BON AIR DINING TABLE
30" Height



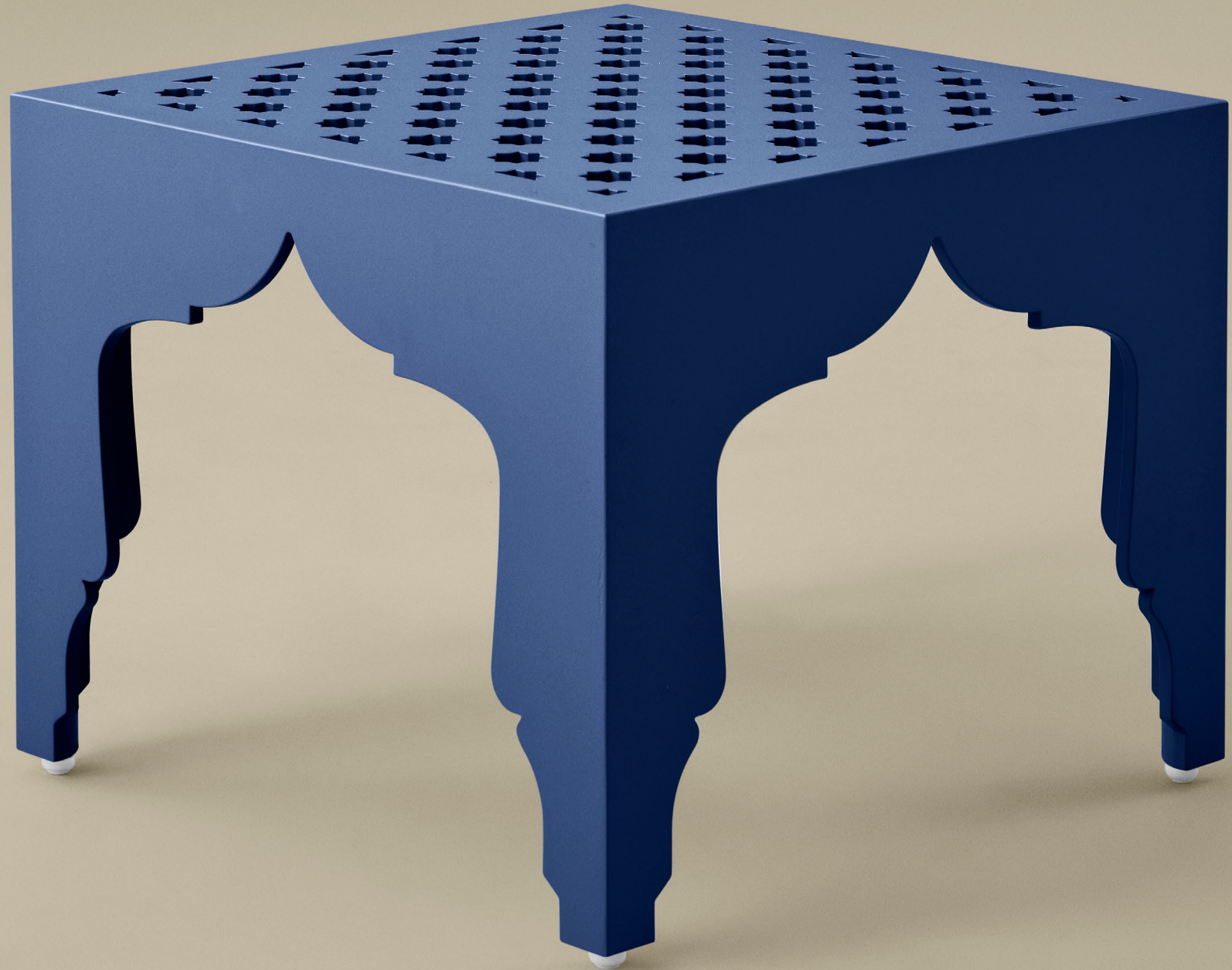
BON AIR HIGH TEA TABLE
25" Height

IZNIK OTTOMAN AND SIDE TABLE

A pair of mid-16th-century Anatolian tiles held in collection at the Victoria and Albert Museum inspired our Iznik Ottoman and Side Table. With their distinctive Turkish arch, Persian star top, and hand-tufted French cushion, the ottoman and side table make enchanting layers for the salient outdoor room.



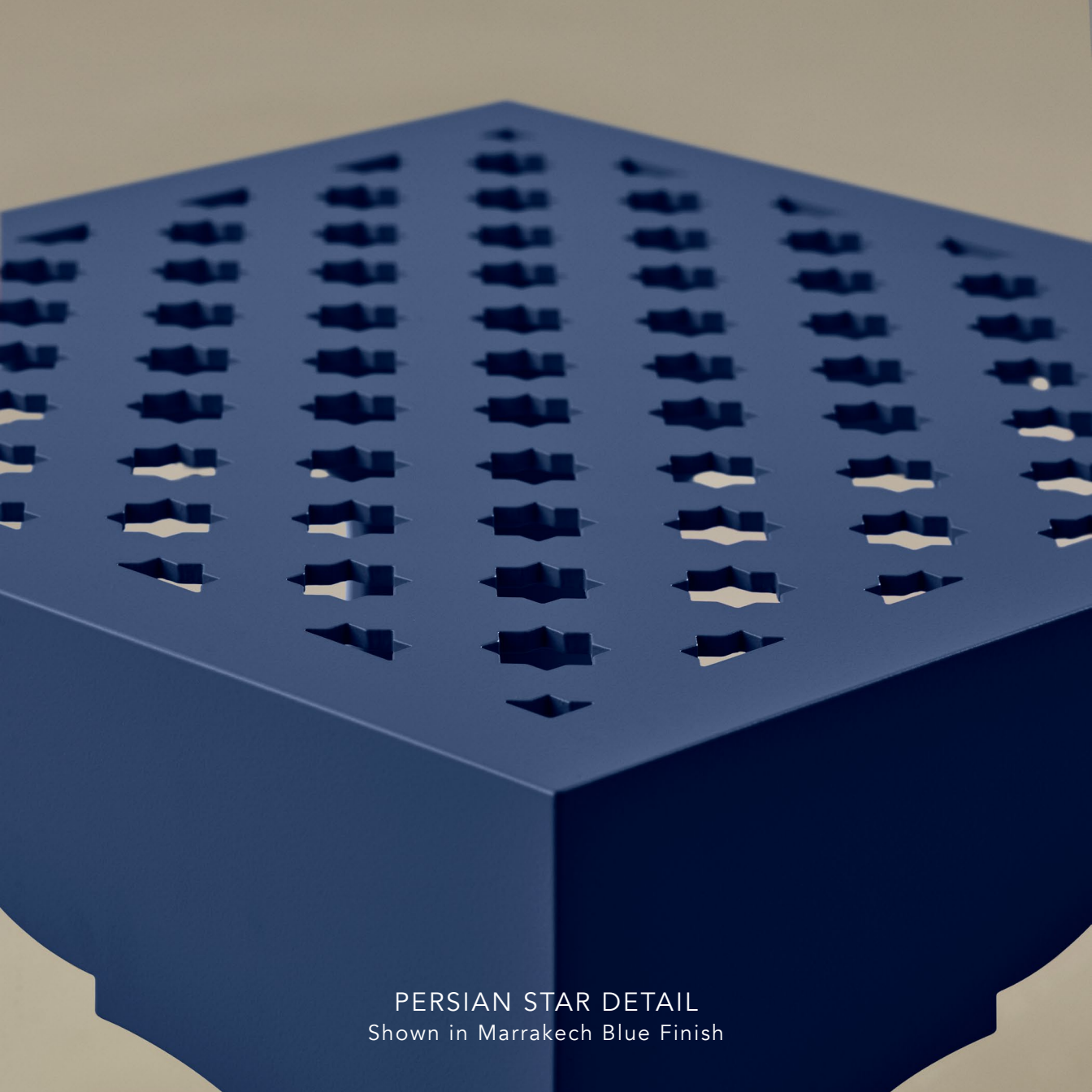
IZNIK OTTOMAN
Poinciana Coral Finish



IZNIK SIDE TABLE
Marrakech Blue Finish



FRENCH CUSHION DETAIL
Shown with our new Piume Scarlet Ibis
Italian Performance Fabric



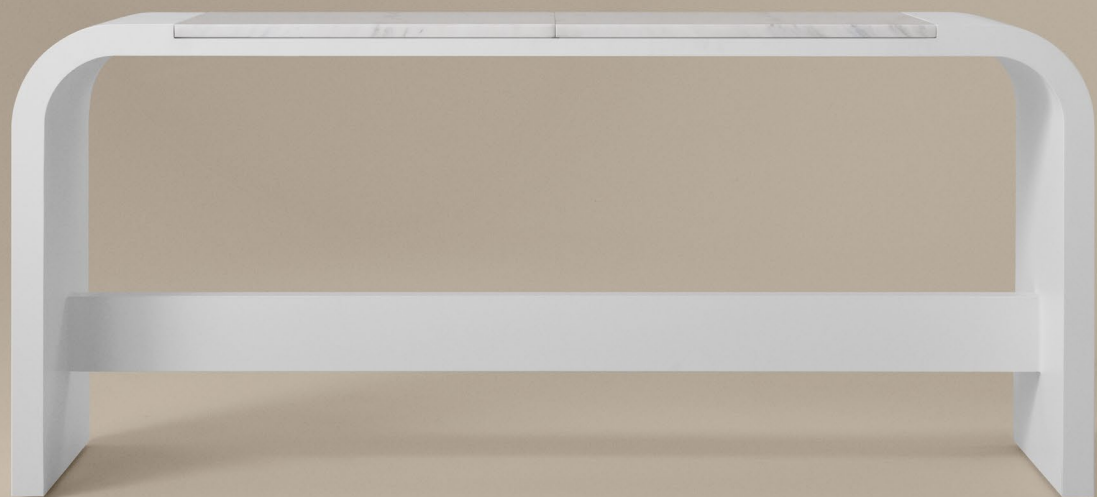
PERSIAN STAR DETAIL
Shown in Marrakech Blue Finish

BALLENGER CONSOLE TABLE AND COFFEE TABLE

With their elegantly partitioned inset stone top and dramatic waterfall shaped aluminum legs, our Ballenger Console Table and Coffee Table exude the simplicity of modernism.

BALLENGER CONSOLE TABLE
BALLENGER COFFEE TABLE
Classic White Finish





BALLENGER CONSOLE TABLE WITH CALACATTA
MICHELANGELO EXTRA NATURAL STONE TOP
Shown in Classic White Finish



BALLENGER COFFEE TABLE WITH
CALACATTA V.III TECHNICAL STONE TOP
Shown in Classic White Finish

FLUVANNA COFFEE TABLE

A cleverly hidden apron allows the stone top of our Fluvanna Coffee Table to float gracefully above its sculptural legs. Fluvanna is the gentle rolling western part of the James River that drifts quietly through Virginia's countryside.

FLUVANNA COFFEE TABLE with
Calacatta Michelangelo Extra Natural Stone Top
Jura Peat Finish





FLUVANNA COFFEE TABLE WITH CALACATTA
MICHELANGELO EXTRA NATURAL STONE TOP
Shown in Jura Peat Finish



PERISTYLE COLLECTION

Named for the colonnaded covered walkway commonly found surrounding Roman courtyards, our Peristyle Collection provides the comfort of indoor furniture by adapting traditional European upholstery techniques for the outdoors, making it ideal for the modern loggia. With frames expertly crafted from the finest aluminum and sealed with our EC² advanced ceramic titanium coating technology, Peristyle is an engineering innovation with a timeless design.

PERISTYLE CLUB CHAIR
PERISTYLE OTTOMAN
La Dolce Vita Willet
Italian Performance Fabric

SUHLING SIDE TABLE
Jura Peat Finish





PERISTYLE SOFA
PERISTYLE CLUB CHAIRS
La Dolce Vita Willet
Italian Performance Fabric

PARSONS COFFEE TABLE with
72" x 30" ADAMS BIG TOP
CUSTOM PARSONS SIDE TABLES with
21" SQUARE ADAMS BIG TOP
Jura Peat Finish

PERISTYLE SOFA
PERISTYLE CLUB CHAIRS
La Dolce Vita Swan
Italian Performance Fabric

WYATT COFFEE TABLE with
60" OVAL ADAMS BIG TOP
CARROLL SIDE TABLES with
21" ROUND ADAMS BIG TOP
York River Oyster Finish



DECAMP LUNE SUN BED

A sea-worthy throne of monumental proportions, our deCamp Lune Sun Bed is defined by its elegant lines, subtle turns and complex construction. The spherical silhouette is built modularly and can be placed atop a penthouse pool deck or the sundeck of a superyacht with ease.

DECAMP INFINI SIDE TABLE

From his Southern Italian home of Elea in 400 BC, the Greek philosopher Zeno first introduced the concept of infinity. Reinventing timelessness with a signature lemniscate shape, our deCamp Infini Side Table is a mathematical feat of the artisans in our workshop. Available with technical stone top, an aluminum top, or a natural stone top.



DECAMP LUNE SUN BED with
Optional Eight-Piece Pillow Package

DECAMP INFINI SIDE TABLE with
Galala Limestone Natural Stone Top
York River Oyster Finish



DECAMP INFINI SIDE TABLE WITH
GALALA LIMESTONE NATURAL STONE TOP
Shown in York River Oyster Finish

SCOUT FOLDING YACHT COLLECTION

Clever engineering marries expertly crafted high performance materials in our first-ever folding yacht furniture. With sculptural silhouettes slim enough to effortlessly stow away, the Scout Folding Yacht Collection summons the adventurous spirit of seafarers worldwide. Named for a treasured Massie family picnic boat, honoring a beloved childhood Gordon Setter of the same name.

SCOUT FOLDING YACHT CHAIRS
Classic White Finish
SCOUT FOLDING YACHT TABLE
Classic White Finish



SCOUT FOLDING YACHT CHAIR
Classic White Finish
SCOUT FOLDING YACHT TABLE
Classic White Finish



SCOUT FOLDING YACHT CHAIR
Shown in Classic White Finish

SCOUT FOLDING YACHT STOOLS
MUNDY DINING TABLE with
45" ROUND ADAMS BIG TOP
Classic White Finish



COUPER CONTRAPPOSTO SUN CHAISE
York River Oyster Finish

COUPER CONTRAPPOSTO SUN CHAISE

Clean and sculptural, the Couper Contrapposto Sun Chaise references classical statuary, finding artistry in asymmetry. With the signature wide and flat armrest of the Couper Collection, our first ever single-arm sun chaise presents the perfect landing pad for a libation. Left arm or right, the choice is yours.





COUPER CONTRAPPOSTO SUN CHAISE
SUHLING SIDE TABLE
Jura Peat Finish



COUPER CONTRAPPOSTO SUN CHAISE
Shown in York River Oyster Finish

GRAVES ROCKING CHAIR AND CLUB CHAIR

Inspired by an 18th century seat once owned by an old family friend, Edward S. Graves, the Graves Rocking Chair and Club Chair retain the fancifully scalloped Gothic lines of their muse, but are handcrafted in high performance aluminum. Gracious curved legs lend them a polished silhouette—an idyllic place to lounge the afternoon away.



GRAVES ROCKING CHAIR
GRAVES CLUB CHAIR
Natural Bronze Finish



GRAVES ROCKING CHAIR
Shown in Natural Bronze Finish



GRAVES CLUB CHAIR
Shown in Natural Bronze Finish

HIGHLAND PALM BOX

In our ancient ancestral home of Scotland, the Highlands are renowned for their natural beauty as the most mountainous part of the United Kingdom. The “Highland line” runs diagonally through the country between the mouths of the historic Clyde and Tay Rivers. Our Highland Palm Box has a strong sense of line, with each board fitting together so that it overlaps the one below.



HIGHLAND PALM BOX
Classic White Finish

McKINNON AND HARRIS®
E S T A T E • G A R D E N • Y A C H T F U R N I T U R E

WWW.MCKINNONHARRIS.COM