

McKINNON AND HARRIS®  
E S T A T E • G A R D E N • Y A C H T F U R N I T U R E

NEW PRODUCTS LOOKBOOK

## DECAMP LUNE OTTOMAN

Mirroring the graceful lines of a sailing yacht's bow, the deCamp Lune Ottoman features smooth contours and a contemporary silhouette with refined comfort, requiring precise craftsmanship to achieve its edited, 1930s-inspired form.



deCAMP LUNE CLUB CHAIR  
deCAMP LUNE OTTOMAN  
Piume Osprey Fabric  
Goshen Stone Finish

SCUPTURA N°1 DRINKS TABLE  
Aegean Bronze Patina  
Marmi Calacatta Natural Stone Top



## SCULPTURA DRINKS TABLES

Textural, harmonious, and useful, our Sculptura Drinks Tables embody our devotion to classicism. Originating from hand-sculpted clay, each piece stands unique in its own interpretation of visual language throughout history.

SCUPTURA N°I, N°II and N°III DRINKS TABLES  
Aegean Bronze Patina  
Marmi Calacatta Natural Stone Top



SCUPTURA N°1 DRINKS TABLE  
Aegean Bronze Patina  
Marmi Calacatta Natural Stone Top

deCAMP LUNE CLUB CHAIR  
Piume Osprey Fabric  
Goshen Stone Finish





SCUPTURA N°II DRINKS TABLE  
Aegean Bronze Patina  
Marmi Calacatta Natural Stone Top

deCAMP CLUB CHAIR  
Piume Bonxie Fabric  
Jura Peat Finish



SCUPTURA N°III DRINKS TABLE  
Aegean Bronze Patina  
Marmi Calacatta Natural Stone Top

duVAL CLUB CHAIR  
Piume Stork Fabric  
Classic White Finish



## CAMPOSTELA CONSOLE TABLE

Inspired by the form of 17th-century monastic fratino tables, our Campostela Console Table features striking, theatrical stretchers and a natural stone top that floats at ease above its lyre-shaped ornamental base.



CAMPOSTELA CONSOLE TABLE  
Natural Bronze Finish  
Marmi Calacatta Natural Stone Top



CAMPOSTELA CONSOLE TABLE  
Natural Bronze Finish  
Marmi Calacatta Natural Stone Top



## STAYMAN RED

This savory shade evokes the spirit of our Grandmother, Ella Wyatt McKinnon Massie, and her Stayman apple orchard at Lone Jack Farm. Offering a grounding effect in the garden, Stayman Red is a flexible hue that pairs well with warm and cool tones alike.



WATSON BENCH  
Stayman Red Finish





ABBOT DINING ARM CHAIR  
Stayman Red Finish

## BASTILLE COLLECTION

With its striking skeleton key-shaped arm and sculptural, French modernist-inspired frame, our Bastille Collection embodies a timeless mix of art and artifact.

It is named for the historic Bastille Key, now held in collection at Mount Vernon, which was given to President George Washington by his friend the Marquis de Lafayette following the end of the French Revolution.





BASTILLE CLUB CHAIRS  
Natural Bronze Finish  
La Dolce Vita Feather Fabric

BASTILLE SIDE TABLE  
Natural Bronze Finish  
Marmi Calacatta Natural Stone Top

BASTILLE CLUB CHAIR  
York River Oyster Finish  
Cielo Moon Fabric  
Optional Luggage Stitching  
Optional Tufted Back Cushion



BASTILLE CLUB CHAIR  
Natural Bronze Finish  
Cielo Moon Fabric  
Optional Luggage Stitching

BASTILLE SOFA  
BASTILLE CLUB CHAIRS  
THIRZA COFFEE TABLE  
Natural Bronze Finish  
Aeolian Swan Fabric





BASTILLE SIDE TABLE  
Natural Bronze Finish  
Marmi Calacatta Natural Stone Top



BASTILLE SIDE TABLE  
Shown in York River Oyster Finish  
with Marmi Calacatta Natural Stone Top

BASTILLE SOFA AND CLUB CHAIRS  
Esmont Slate Finish  
La Dolce Vita Moon Fabric  
Optional Luggage Stitching



LEGGETT LANTERNS  
Gwynn's Island Gray Finish

WYATT RECTANGULAR COFFEE TABLE  
Esmont Slate Finish  
Marmi Taj Mahal Natural Stone Top

## DIONYSUS SCULPTURA COFFEE TABLE

Dionysus, the Greek god regarded as the protector of gardens, healing and fertility, has long been the McKinnon and Harris brand icon. His likeness is set in bronze on our furniture nameplates and depicted in watercolor on our Style Books.

Born from our affection for classical antiquities, our Dionysus Sculptura Coffee Table originates from a hand-carved clay model of the god. Now enshrined in our contemporary materials of ceramic titanium-coated aluminum and natural stone, this enduring collection is one for the ages.



BASTILLE SOFAS AND CLUB CHAIRS  
Esmont Slate Finish  
La Dolce Vita Moon Fabric  
Optional Luggage Stitching



DIONYSUS SCULPTURA COFFEE TABLES  
Esmont Slate Finish  
Marmi Taj Mahal Natural Stone Tops

LEGGETT LANTERNS  
Gwynn's Island Gray Finish



DIONYSUS SCULPTURA COFFEE TABLE

Shown in Esmont Slate Finish  
with Marmi Taj Mahal Natural Stone Top

## ESMONT SLATE

With subtle blue and brown undertones, McKinnon and Harris Esmont Slate echoes Virginia's rich history with the riverbed stone. It is aptly named for the historic Albemarle County quarry located between the James River's Ballenger and Totier Creeks.



## VIRGINIA BENCH WITH BONNYRIGG BACK

With its diamond lattice detail, our Virginia Bench with Bonnyrigg Back embraces an East-meets-West philosophy originally espoused in Bonnyrigg, Scotland. It was here, in their family's church pew, that the "cockpen" Chinese Chippendale style originated for the Earls and Marquesses of Dalhousie.







VIRGINIA THREE-SEATER BENCH WITH BONNYRIGG BACK  
Shown in Poinciana Coral Finish

## NEW FROM THIRZA

Recalling travels abroad to the region, we've always wanted to create a collection inspired by contemporary Mediterranean design. Our Thirza Collection takes notes from mid-century modern and traditional American design as well, expressing its distinct personality through curved, organic shapes and whimsical hand-sculpted details. Thirza is named for primary designer Colin Knight's mother and grandmother, both artists and craftspeople themselves who inspired his passion for design and handcraft.



THIRZA TALL CHAIRS  
York River Oyster Finish  
Piume Oystercatcher Fabric

THIRZA TALL TABLE WITH  
CALACATTA MICHELANGELO  
NATURAL STONE TOP  
York River Oyster Finish





THIRZA DRINKS CART  
Shown in Majesty Palm Finish



THIRZA DRINKS CART  
Natural Bronze Finish



THIRZA SUN CHAISE  
Shown in Chesapeake Taupe Finish



THIRZA SUN CHAISES  
Goshen Stone Finish  
Cielo Sandpiper Fabric

THIRZA SIDE TABLE WITH  
CALACATTA MICHELANGELO  
NATURAL STONE TOP  
Goshen Stone Finish

THIRZA DAY BED  
Esmont Slate Finish  
La Dolce Vita Feather Fabric

OPHIDIAN SIDE TABLE WITH  
GALALA LIMESTONE  
NATURAL STONE TOP  
Aegean Bronze Patina



THIRZA DAY BED

Shown in Esmont Slate Finish with La Dolce Vita Feather Fabric

## OPHIDIAN SIDE TABLE

Deeply inspired by a bronze serpent seen at the Villa Kerylos in Beaulieu-sur-Mer, we set out to design a side table that would reflect the natural curiosity of the ancient Greeks. With Mother Nature as our muse, we developed our hand applied Aegean Bronze Patina that brings our Ophidian Side Table's sense of movement and texture to life.



OPHIDIAN SIDE TABLE  
Aegean Bronze Patina  
Galala Classico Limestone



Adorned with cast iron serpents, antique Val d'Osne urns line the garden of Co-founder and CEO Will Massie's Richmond, Virginia garden.



OPHIDIAN SIDE TABLE WITH  
GALALA CLASSICO LIMESTONE NATURAL STONE TOP  
Shown in Aegean Bronze Patina

## WATSON BENCH

Named for our dear friend Elizabeth Otey Watson, the Watson Bench features a horizontal grid-style back with a pagoda-inspired yoke. Elizabeth became enamored with Cantonese antiques while living in East Asia with her husband for nearly two decades during the 1950s and '60s, and she is renowned for her collection of Ming and Qing dynasty pieces.





WATSON THREE-SEATER BENCH  
Chesapeake Taupe Finish  
Cielo Oystercatcher Fabric  
with Piume Wigeon Welt



WATSON THREE-SEATER BENCH  
Shown in Traditional Black Finish

## LEGGETT LANTERNS

This versatile trio of portable hurricanes creates enduring ambiance for estate, garden, and yacht settings. Named in honor of our longtime neighbor, preservationist and gardener, Patricia Leggett, the lanterns' streamlined frames blend seamlessly with both contemporary and traditional designs.

LEGGETT LANTERN TRIO  
Gwynn's Island Gray Finish





LEGGETT LANTERN TRIO  
Lancaster Blue Finish

LEGGETT LANTERN TRIO  
Shenandoah Gray Green Finish



## BON AIR HIGH TEA TABLE

Exhibiting influence from 20th-Century French modernism, our Bon Air (“good air” in French) High Tea Table appears to float effortlessly in mid-air. Taller than our coffee tables, lower than our traditional dining table height, it pairs well with sofas or a grouping of club chairs to create a less formal arrangement for dining and cocktails. It is available with either a Marmi Natural Stone top or a technical stone top.



BON AIR HIGH TEA TABLE  
Traditional Black  
Taj Mahal Natural Stone Top

Available with  
Natural Stone



Taj Mahal

Calacatta Michelangelo Extra



Belgian Bluestone

Galala Classico



BON AIR DINING TABLE  
30" Height



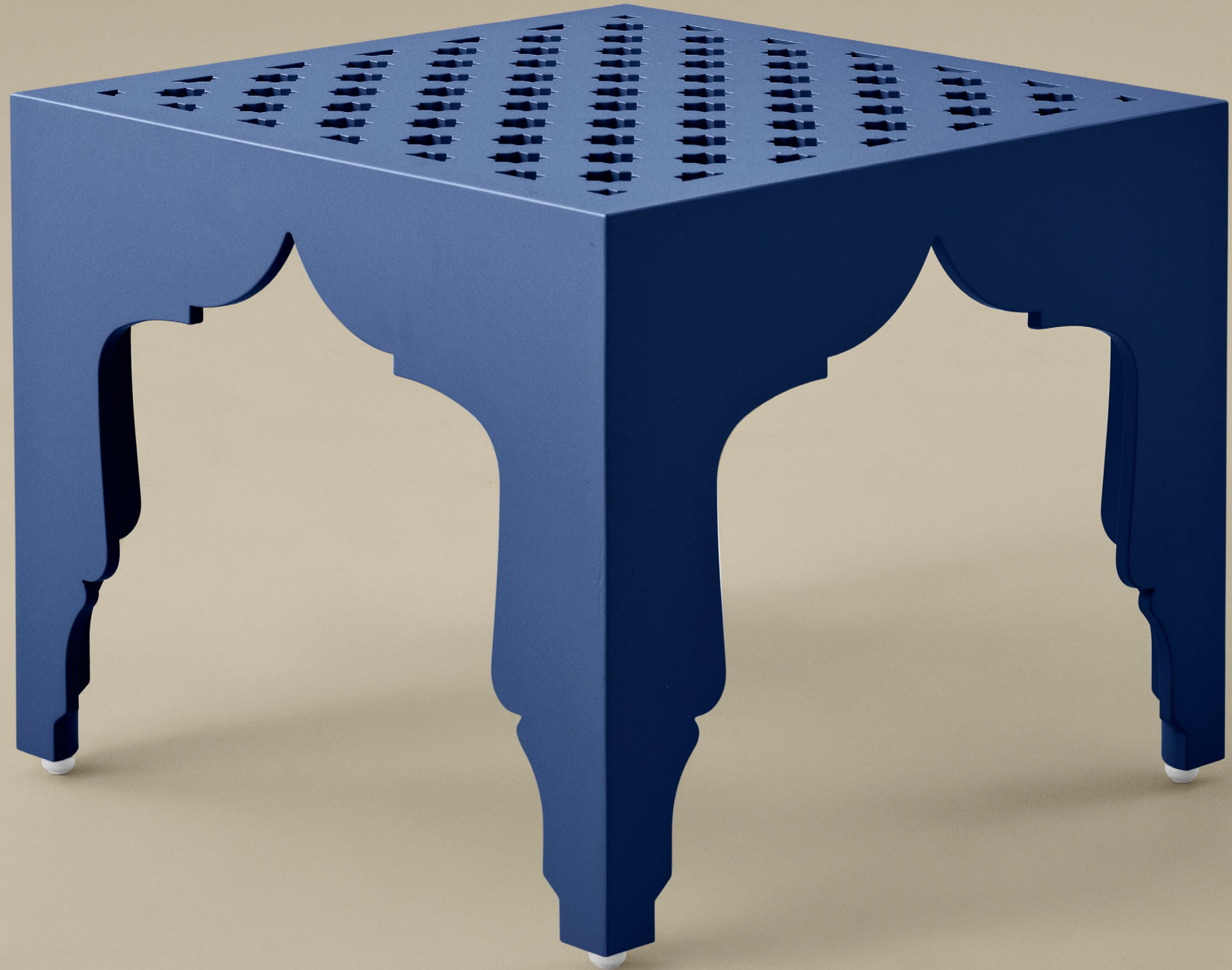
BON AIR HIGH TEA TABLE  
25" Height

## IZNIK OTTOMAN AND SIDE TABLE

A pair of mid-16th-century Anatolian tiles held in collection at the Victoria and Albert Museum inspired our Iznik Ottoman and Side Table. With their distinctive Turkish arch, Persian star top, and hand-tufted French cushion, the ottoman and side table make enchanting layers for the salient outdoor room.



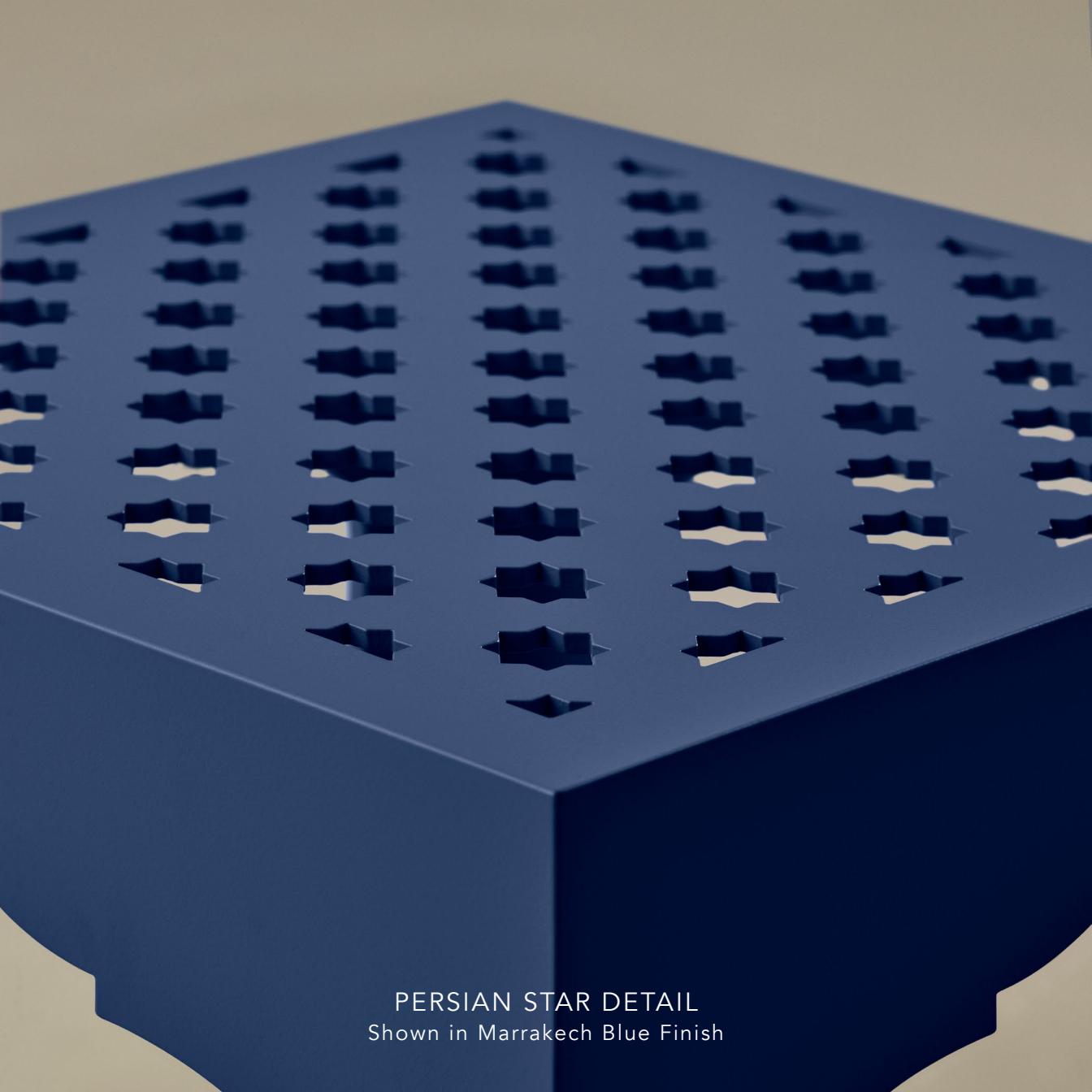
IZNIK OTTOMAN  
Poinciana Coral Finish



IZNIK SIDE TABLE  
Marrakech Blue Finish



FRENCH CUSHION DETAIL  
Shown with our new Piume Scarlet Ibis  
Italian Performance Fabric



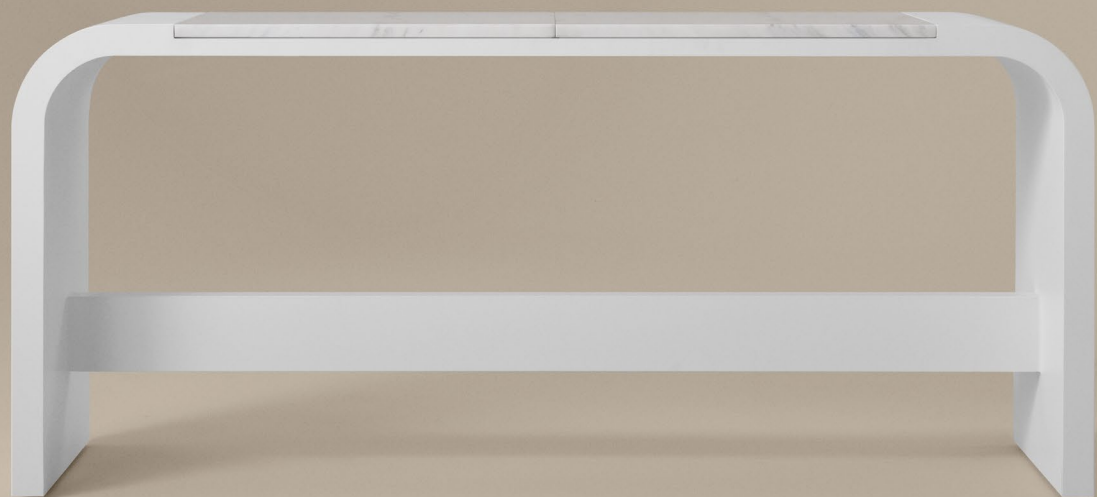
PERSIAN STAR DETAIL  
Shown in Marrakech Blue Finish

## BALLENGER CONSOLE TABLE AND COFFEE TABLE

With their elegantly partitioned inset stone top and dramatic waterfall shaped aluminum legs, our Ballenger Console Table and Coffee Table exude the simplicity of modernism.

BALLENGER CONSOLE TABLE  
BALLENGER COFFEE TABLE  
Classic White Finish





BALLENGER CONSOLE TABLE WITH CALACATTA  
MICHELANGELO EXTRA NATURAL STONE TOP  
Shown in Classic White Finish



BALLENGER COFFEE TABLE WITH  
CALACATTA V.III TECHNICAL STONE TOP  
Shown in Classic White Finish